

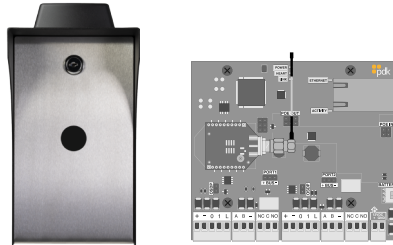
Red Pedestal Outdoor Controller

Pdk's Red™ Pedestal Controller is the solution for access control needs in outdoor applications such as parking lots, gated communities, and storage facilities. A robust weatherproof stainless-steel housing protects the controller and provides a blank faceplate for your favorite reader. It features built-in network connectivity and self-discovery to simplify IP configuration. It is also fully equipped with controller health monitoring and OSDP functionality.

Models

Ethernet PN: **RPE**
Wireless PN: **RPW**

WiMAC Version



Features

- 
advanced security
 ProdataKey Red™ products lead the industry in secure communication protocols. This includes OSDP, mobile, and encrypted credential communication.
- 
power monitoring
 Equipped with an on-board power supply, and a fully-supervised power circuit that monitors input, output, battery voltage, and overall controller health.
- 
plug'n'play connectivity
 All PDK Red devices were designed to be plug n' play. That means they're easy to install right out of the box. It's simple to add any device no matter how large the job is.
- 
self discoverable
 The Red Pedestal will be automatically discovered by the Cloud Node when an Ethernet cable is connected; it is not necessary to enter the IP address; the device is self-discoverable.
- 
eliminate trenching
 Protecting access to gates and exposed areas has never been easier or more cost-effective. Because of our WiMAC™ wireless capabilities, the gate io eliminates the substantial expenses associated with trenching.
- 
system scalability
 Whether you need two doors or a thousand, the PDK Red Pedestal gives you the flexibility to add more doors anytime, anywhere, on any device.



Specifications

Connections

Removable Screw-down Terminals
Built-in Power Supply
Industrial-grade 2A Form-C Relays (2)
Reader Input (2)
Input A (2)
Input B (2)

Communication Options

Ethernet
WiMAC™ Wireless (2.4 GHz/ 802.15.4)
Encryption: AES 128bit
Wireless Range: 1 Mile LoS, 450ft indoor average

Environmental

Temperature: -20° ~ +60° C /-4° ~ +140° F
Humidity: 0 - 95% relative humidity
non-condensing

Enclosure

Dimensions (W x H x D) 5.5" x 9.5" x 5.5"
Stainless-Steel enclosure

Optional Parts

Pole Mount Kit (PMK)

Weight

RPE/RPW - 7.3 lbs (116.8 oz)

Manufacturer's Limited Warranty

One to five-year warranty against defects in materials and workmanship. For full details, visit www.prodatakey.com/warranty

Requirements

Power

Included Power Supply: 14V DC, 2A transformer
12V-24V AC/DC Input
12VDC 1.2A *Battery-Backed Output
Powers readers and other door hardware directly from the bus.
Operating Amperage: 35mA (Continuous amperage draw when idle)
*Battery not included